

VALUE-BASED HEALTHCARE CONFERENCE 2024

22-23 AUGUST 2024

Do I Require an MRI for my Lower Back Pain? - Evaluating the ACE Clinical Guidance

Authors: Pirateb Sundaram¹, Ng Jing Chun¹, Weng Jiayi¹, Wong Mei Ping Pearlyn², Tan Cher Heng², Yap Ming Quan Wayne¹

¹ Department of Orthopaedic Surgery, Tan Tock Seng Hospital

² Department of Diagnostic Radiology, Tan Tock Seng Hospital

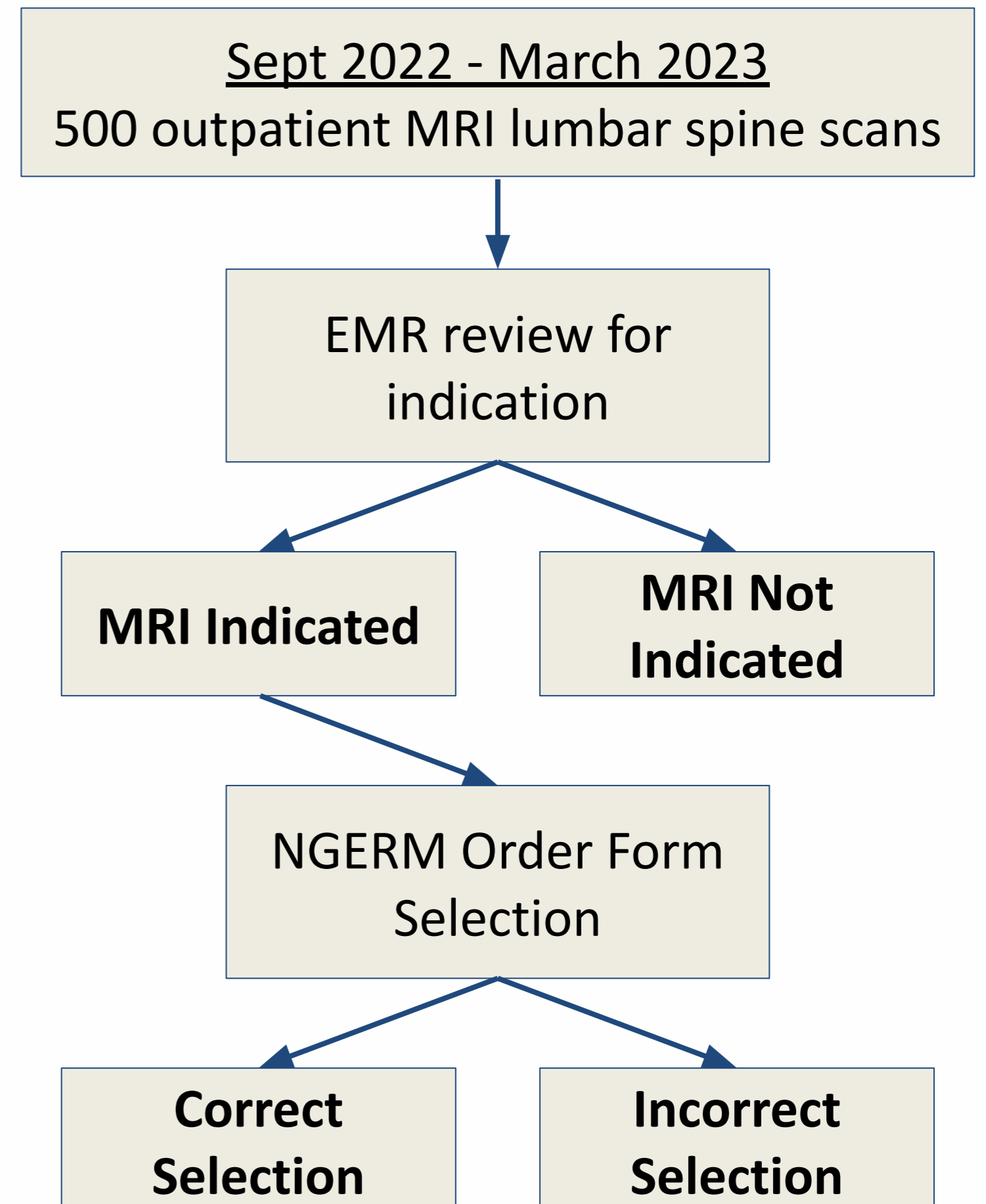
Aim:

- 1) To evaluate the rate of appropriate use of Magnetic Resonance Imaging (MRI) lumbar spine performed at a tertiary hospital, based on the Agency for Care Effectiveness (ACE) Clinical Guidance (October 2020).
- 2) To evaluate if this ACE indication was selected correctly on NGEMR MRI order form by clinicians.

Background:

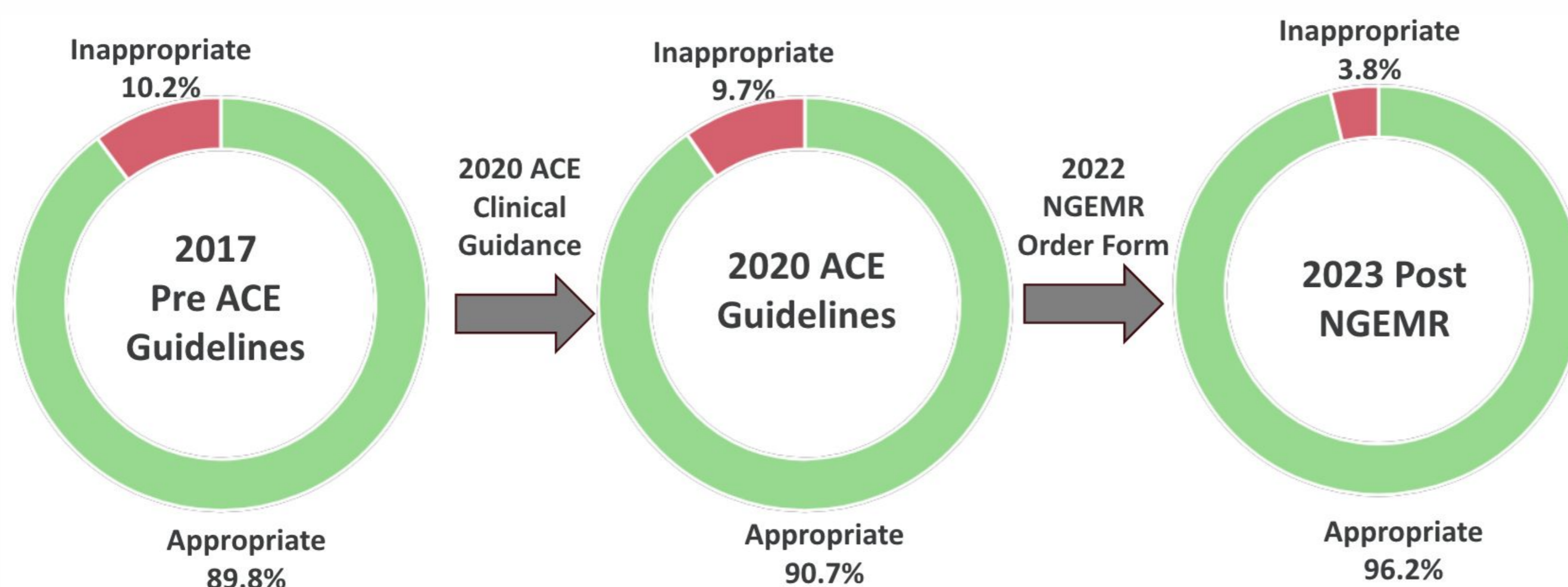
- ACE Clinical Guidance for MRI imaging was adopted by our institution in 2020 and NGEMR order form integration done in 2022
- This study evaluates if the ACE Clinical Guidance and NGEMR order form integration were able to reduce unnecessary MRI scans and if these guidelines were recognised by our clinicians and reflected in their MRI orders

Methodology

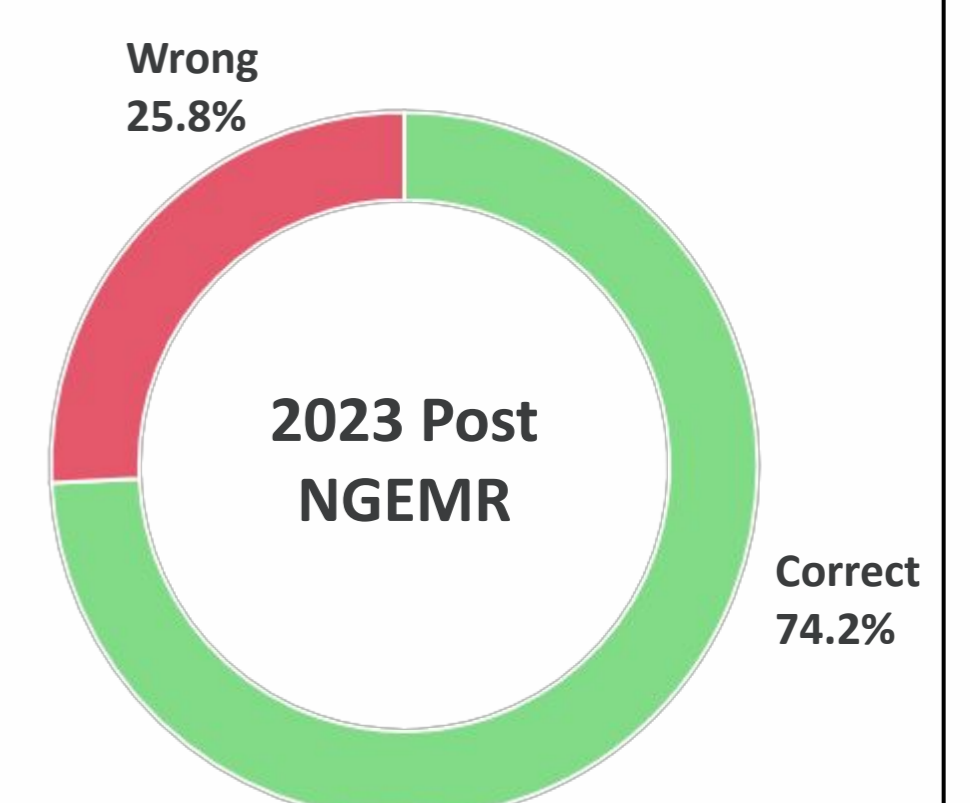


Results

Were the MRIs Appropriately ordered?



Was the NGEMR order form selected correctly?



Discussion / Key Points:

- Consistent reduction in inappropriate MRI order forms from greater awareness of the ACE guidelines
- NGEMR order forms can allow for flexibility for clinicians to make clinical judgements for inappropriate MRIs
- Many factors as to why clinicians make wrong selections on the order form – this can be further improved by refining the order form and removing ambiguity

Conclusion:

- ACE clinical guidelines and NGEMR order form have helped to reduce the number of unnecessary MRI lumbar spine orders
- Further efforts to educate clinicians on the guidelines and streamlining of order form can help to further reduce unnecessary and incorrectly selected MRI orders